

# PRO•TEC GABLE BUILDINGS

## ENGINEERED FOR DURABILITY



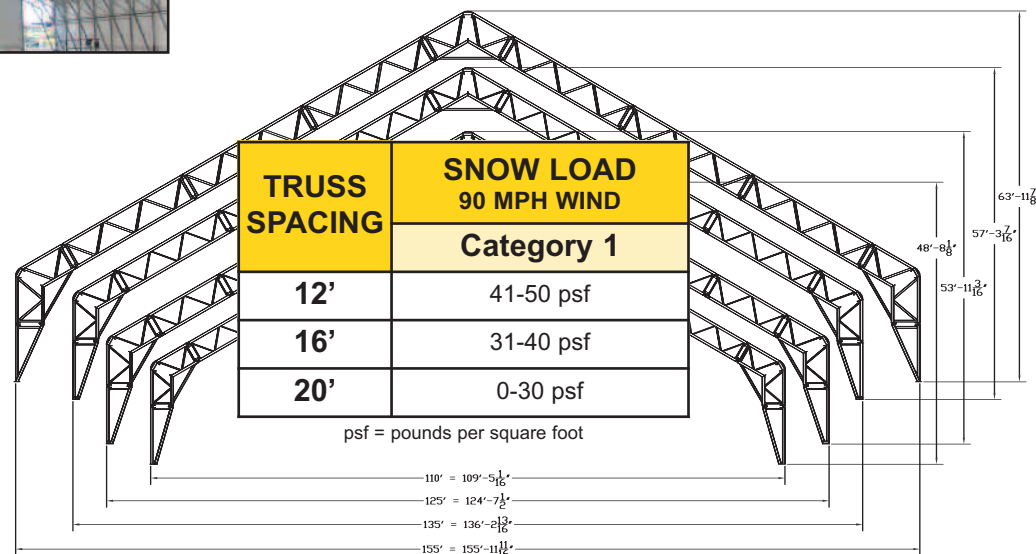
***The Sioux Steel Company is proud to announce the availability of their new expanded line of Pro•Tec buildings.***



The **GABLE STYLE BUILDING** has the same innovative traits that have kept Sioux Steel on the cutting edge for over 90 years. Our customers are able to order widths up to 155' in a gable style tension membrane structure.

Common components promote economy in construction and the powder-coated finish gives lasting durability. Hot dipped galvanizing is optional.

Multiple truss spacing offers different loading capabilities and gives you a versatile structure to use as a riding arena, along with various commercial or industrial applications.



### FOR MORE INFORMATION AND YOUR NEAREST DEALER, CONTACT:

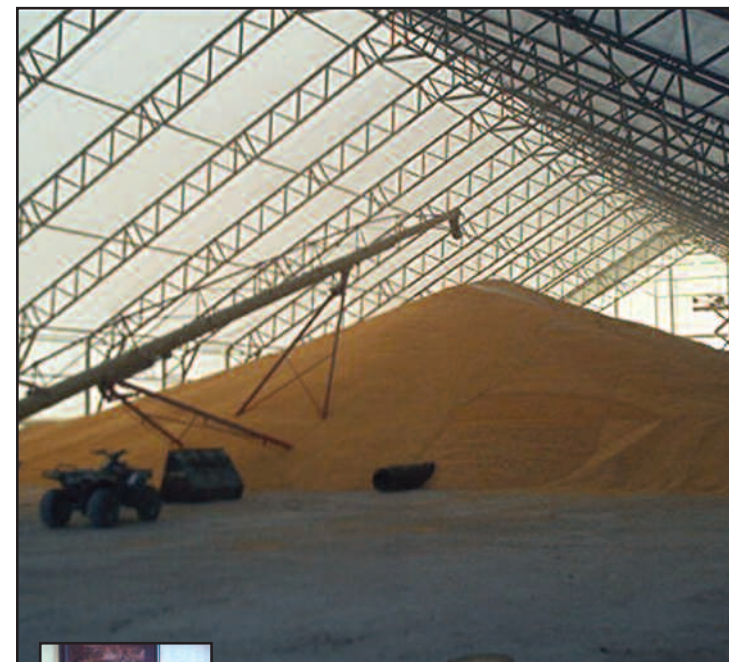
Sioux Steel Company  
196 1/2 East 6th St.  
P.O. Box 1265  
Sioux Falls, SD 57101

**800-557-4689**

605-336-1750

Fax: 605-357-8597

[www.siuoxsteel.com](http://www.siuoxsteel.com)



**Mitch Williams**  
President/CEO  
Ag Partners Coop

"In today's environment, we wanted to add storage that would give us maximum flexibility. Our hope is that every year we are able to fill this building with grain. The reality is that we have experienced times that grain was short and our need for storage was not as great. With this building, we believe that it gives us flexibility to use it for other purposes, such as seed storage, equipment storage, and even possibly fertilizer storage. Getting the most out of our dollar was critical and I believe we accomplished this with the Sioux Steel Building."



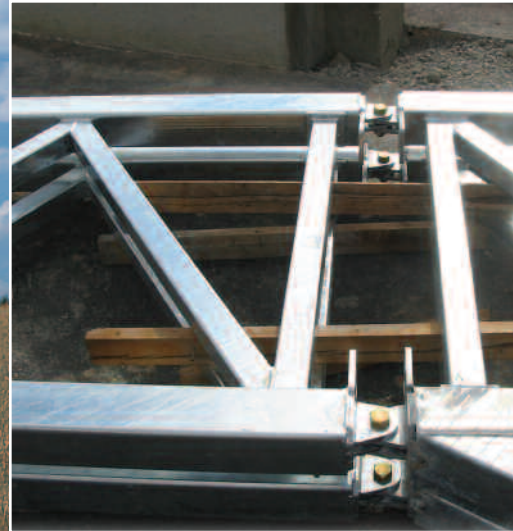
### Why Choose Pro•Tec Buildings?

- **SAVES** you money by protecting your investments.
- **OUTSTANDING** height, width and sidewall clearance for optimum capacity and accessibility.
- **AVAILABLE** in widths up to 155' and manufactured in the length you require to meet your needs.
- **STRONG**, durable steel framework assembly with unmatched protection against rust and corrosion.
- **TOUGH**, tightly woven polyethylene fabric cover stands tough against the elements and resists tearing and leakage.
- **EXCELLENT** structure to fit your needs in multiple applications for storage of equipment or commodities.

## MANUFACTURED IN THE U.S.A.

196 1/2 E. 6th St. • Sioux Falls, SD 57101 • 800-557-4689 • [www.siuoxsteel.com](http://www.siuoxsteel.com)





196 1/2 E. 6th St. • Sioux Falls, SD 57101  
800-557-4689 • [www.siuoxsteel.com](http://www.siuoxsteel.com)

*Sioux Steel*  
**PRO•TEC**  
*Engineered Gable Buildings*  
*Quality you have come to expect.*



Sioux Steel Company • P.O. Box 1265 • Sioux Falls, SD 57101  
800-557-4689 • 605-336-1750 • Fax: 605-357-8597 • [www.siuoxsteel.com](http://www.siuoxsteel.com)